

# Enterprise IP Phone SIP-T28P

## CUBICAL WARRIOR QUICK START GUIDE



2216 36th Street | Suite 100 | Everett, WA 98201

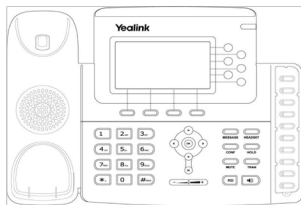
☎ 1.877.208.9710 ✉ [hello@nwvox.com](mailto:hello@nwvox.com)

# IP Phone Overview

## What's in the box

The following items are included in your package. If you find anything missing contact Northwest Vox.

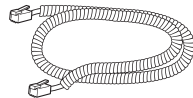
IP Phone



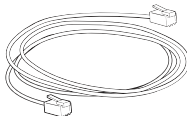
Handset



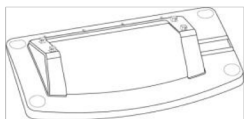
Handset Cord



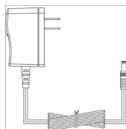
Ethernet Cable



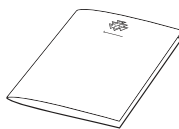
Stand



Power Adapter  
(Optional)



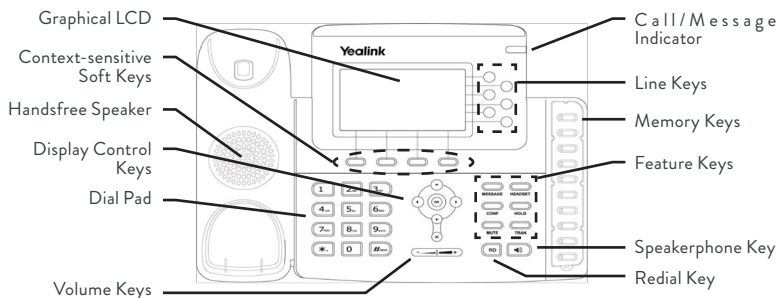
Quick Start Guide &  
Quick Reference Guide



CD-ROM



## IP T28P Features

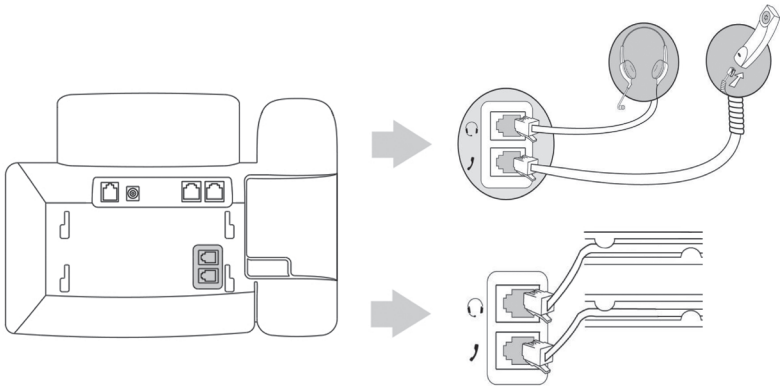


# Installation

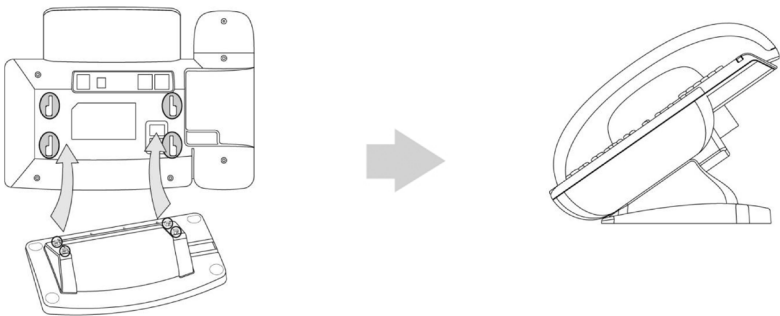
## Basic Set-up

### Assembling the Phone:

- ① Connecting Handset and Headset:



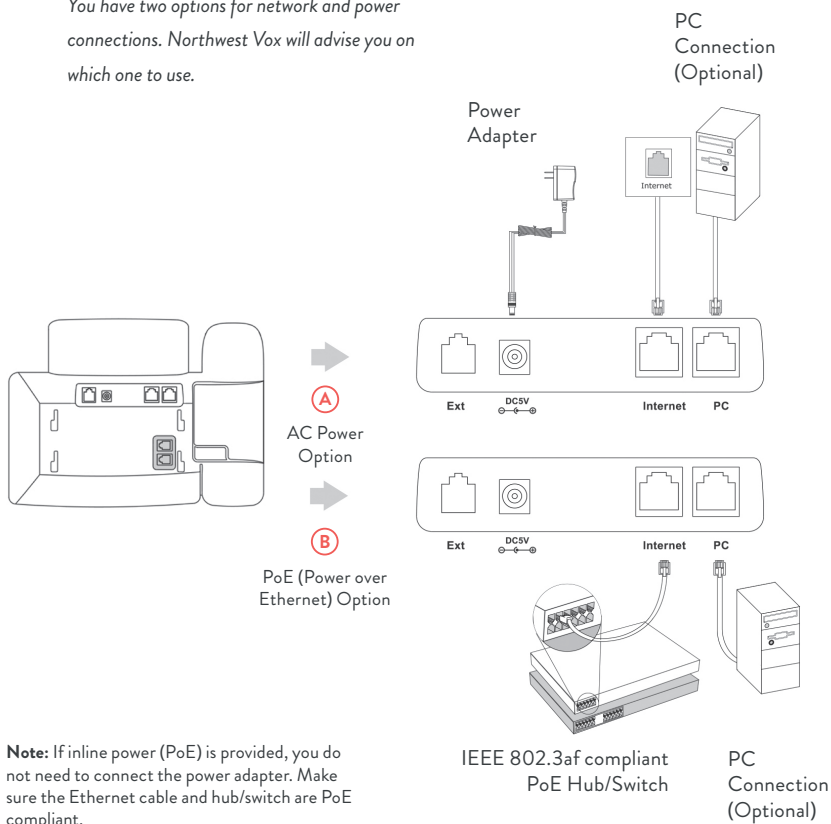
- ② Attaching the Base:



## Assembly continued

### ③ Connecting Network and Power:

You have two options for network and power connections. Northwest Vox will advise you on which one to use.



## Startup

After the IP phone is connected to the network and supplied with power, it automatically begins the initialization process. After startup, the phone is ready for use. You can configure the phone via web user interface or phone user interface.



2216 36th Street | Suite 100 | Everett, WA 98201

## CONTACT US

We know your phone will inevitably break from your sheer strength! This guide is so the warrior knows how to hang up the phone when the face plate flies off. Oh, and call us if this happens.

☎ 1.877.208.9710 ✉ [hello@nwvox.com](mailto:hello@nwvox.com)