



Ultra-elegant IP Phone SIP-T48G

GATEKEEPER QUICK START GUIDE



2216 36th Street | Suite 100 | Everett, WA 98201

☎ 1.877.208.9710 ✉ hello@nwvox.com

IP Phone Overview

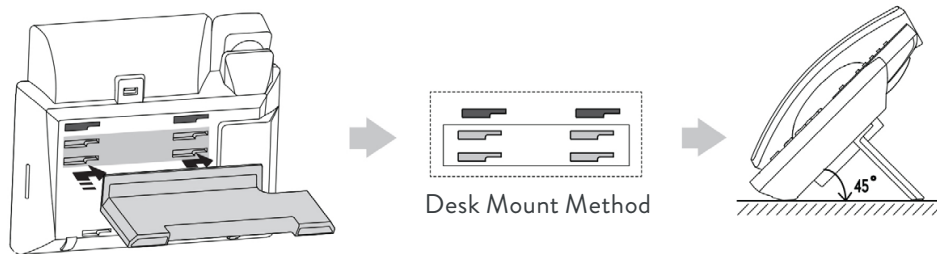
What's in the box

The following items are included in your package. If you find anything missing, contact Northwest Vox.



Assembling the Phone:

- 1 Attach the stand:

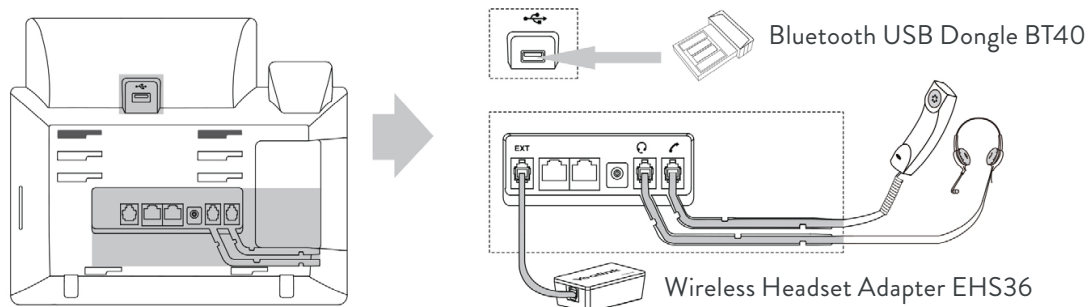


Note: For more information on how to mount the IP phone to a wall, refer to Yealink Wall Mount Quick Installation Guide for SIP-T4X IP Phones.



The two wall mounts slots are plugged up by silica gel. You can pull out the silica gel when mounting your IP phone to a wall.

- 2 Connect the handset and optional headset:

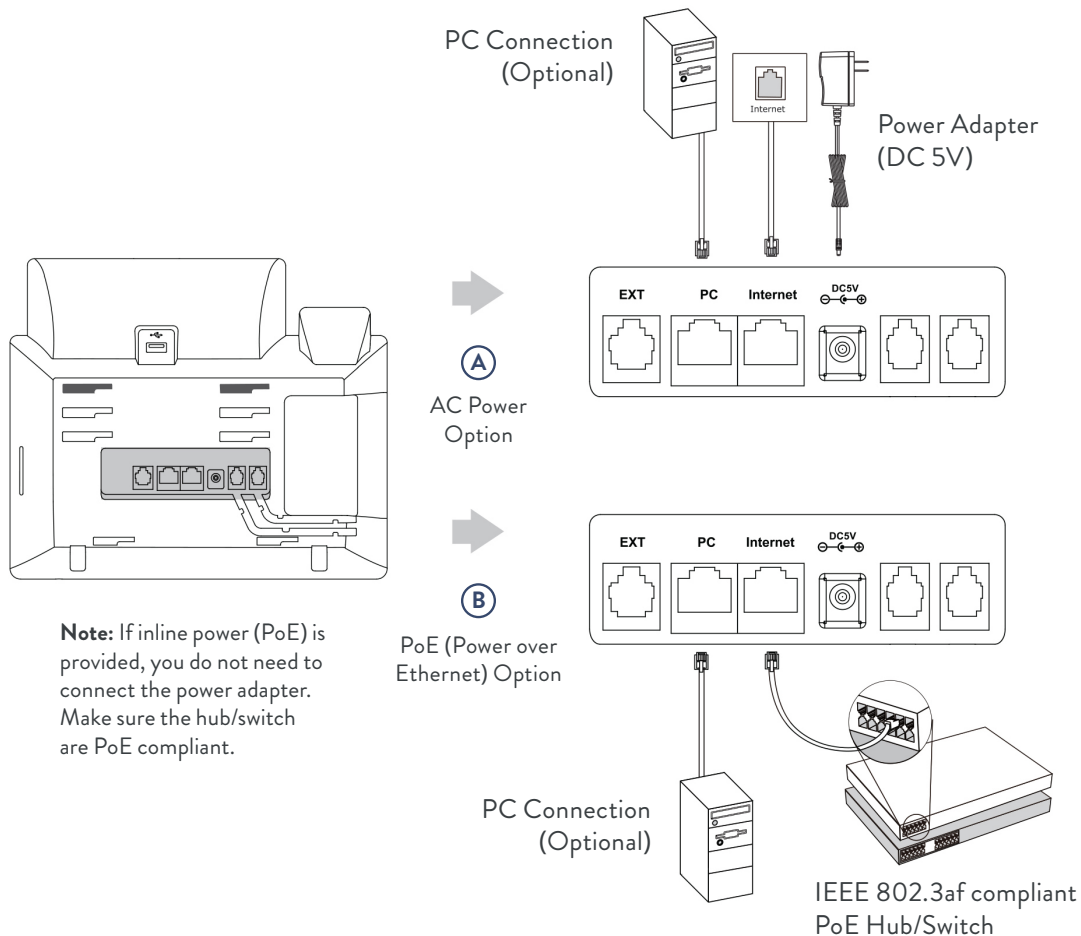


Note: The headset, Bluetooth USB dongle BT40 and wireless headset adapter EHS36 should be purchased separately. The EXT port can also be used to connect the expansion module EXP40. For more information on how to use the EHS36, EXP40 and Bluetooth USB Dongle, refer to Yealink EHS36 User Guide, Yealink EXP40 User Guide and Yealink Bluetooth USB Dongle BT40 User Guide.

Assembly continued

③ Connect the network and power:

You have two options for network and power connections. Northwest Vox will advise you on which one to use.



Startup

After the IP phone is connected to the network and supplied with power, it automatically begins the initialization process. After startup, the phone is ready for use. You can configure the phone via web user interface or phone user interface.

Check with Northwest Vox if any error appears during the registration process or a specific condition is required for your registration.

Register status icons on the LCD screen:



(Green) Registered



(Gray) Register Failed



(Yellow) Registering



CONTACT US

Bidazzlers were designed to dazzle the socks off your clients. Just in case, we recommend having spare socks on hand. Call us if you run out.

📞 1.877.208.9710 ✉️ hello@nwvox.com