

Enterprise IP Phone SIP-T26P

GATEKEEPER QUICK START GUIDE



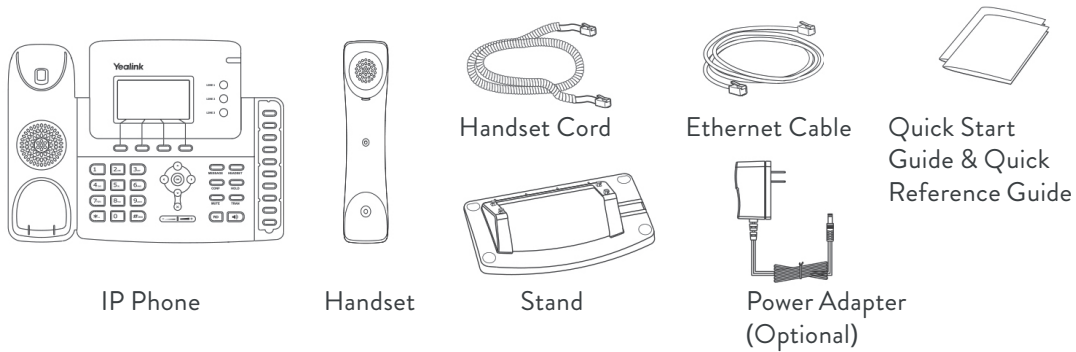
2216 36th Street | Suite 100 | Everett, WA 98201

 1.877.208.9710  hello@nwvox.com

IP Phone Overview

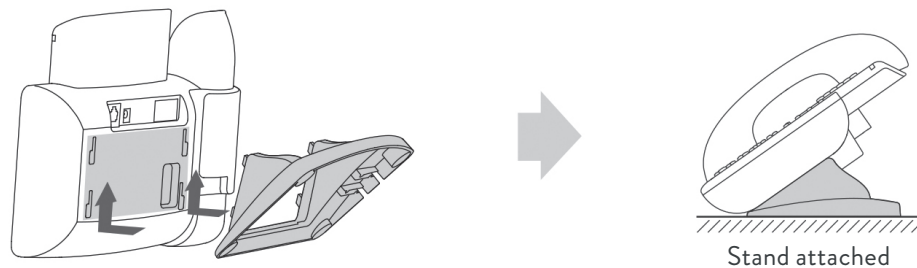
What's in the box

The following items are included in your package. If you find anything missing, contact Northwest Vox.

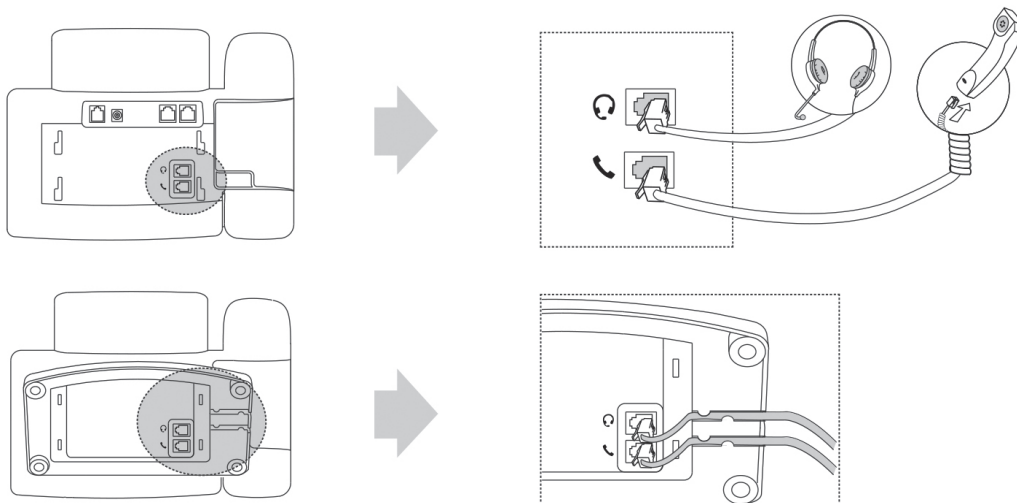


Assembling the Phone:

- 1 Attach the stand:



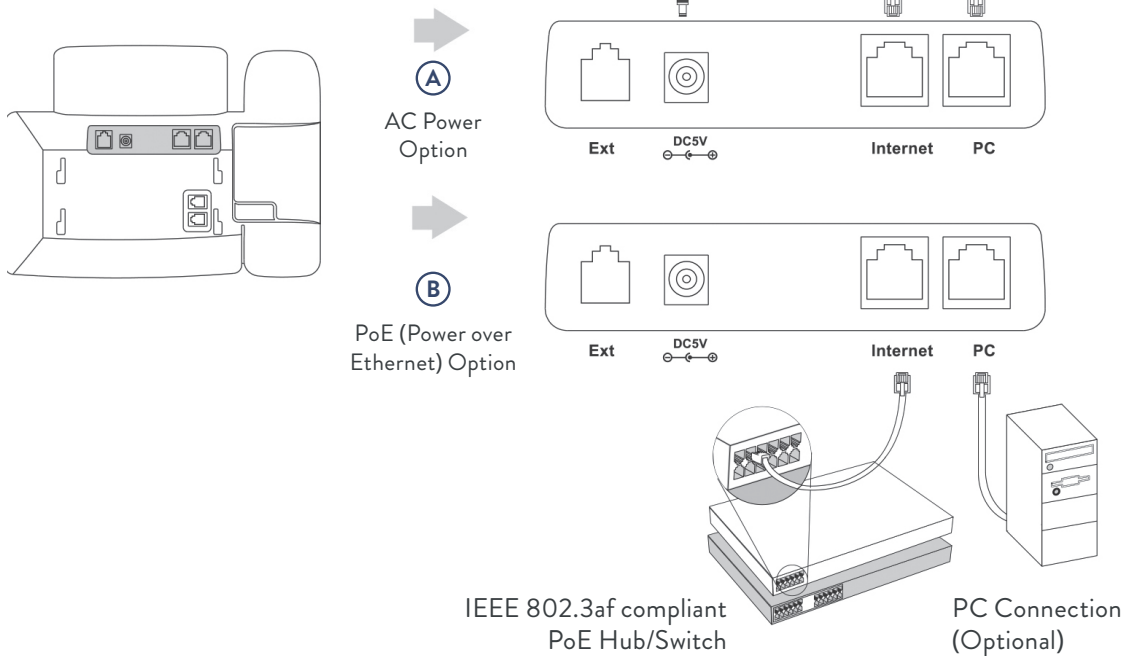
- 2 Connect the handset and optional headset:



Assembly continued

③ Connect the network and power:

You have two options for network and power connections. Northwest Vox will advise you on which one to use.



Note: If inline power (PoE) is provided, you do not need to connect the power adapter. Make sure the Ethernet cable and hub/switch are PoE compliant.

Startup

After the IP phone is connected to the network and supplied with power, it automatically begins the initialization process. After startup, the phone is ready for use. You can configure the phone via web user interface or phone user interface.



CONTACT US

GateKeeping is very important for large castle real estate. Controlling the gate to the office is difficult. Congratulations! You will master the phone system before anyone else!

📞 1.877.208.9710 ✉️ hello@nwvox.com