



IP-430

CUBICAL WARRIOR QUICK START GUIDE



2216 36th Street | Suite 100 | Everett, WA 98201

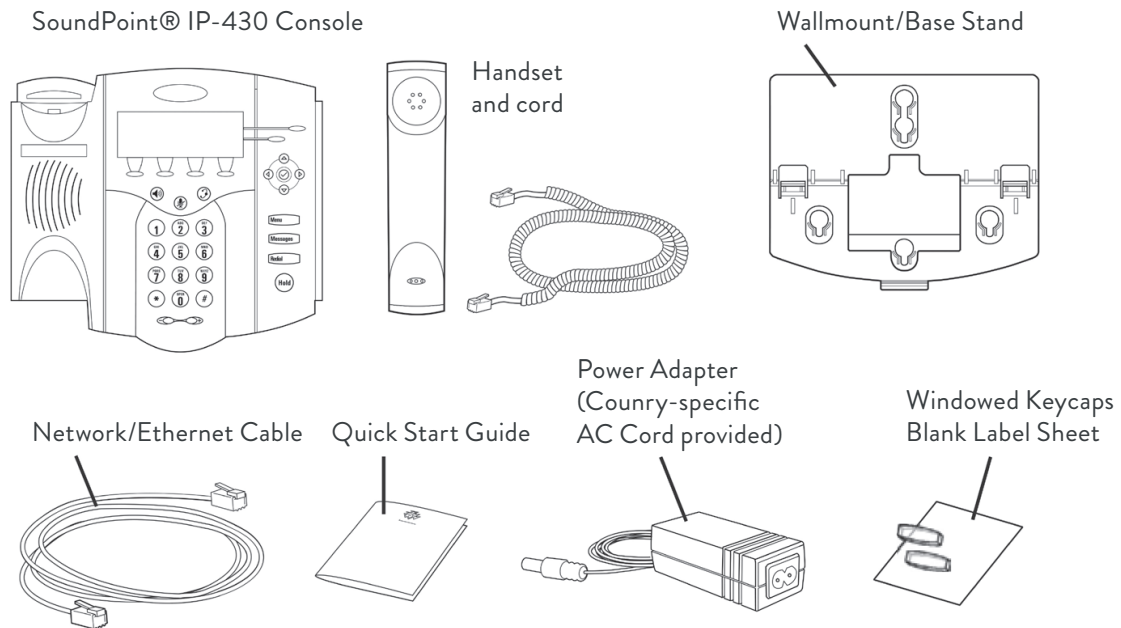
☎ 1.877.208.9710 ✉ hello@nwvox.com

IP Phone Overview

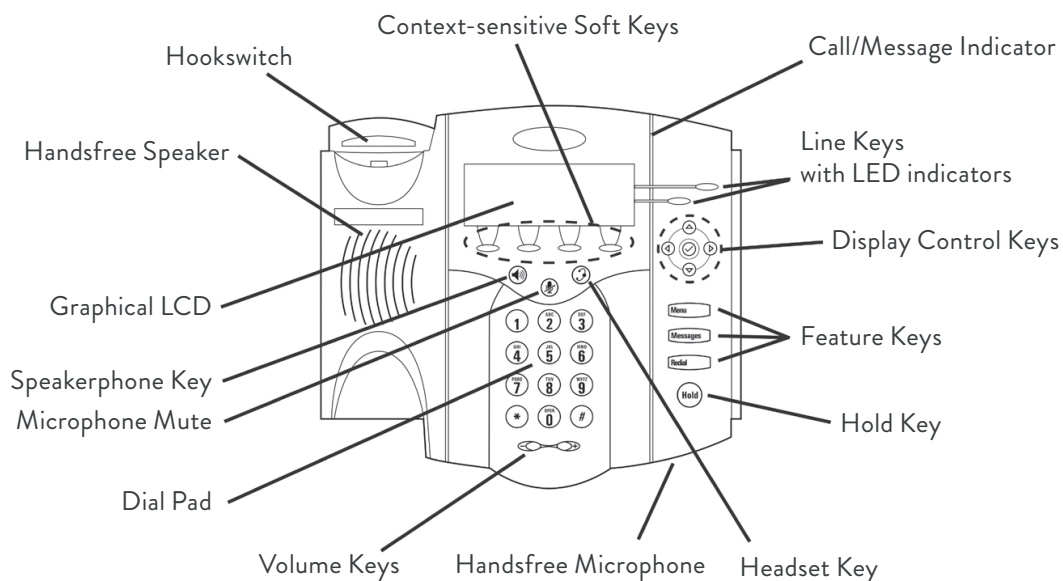
What's in the box

Thank you for choosing the SoundPoint® IP-430, a two-line Voice over IP telephone with features and functions such as Multiple Call Appearances, Call Hold, Transfer and Conferencing over an IP network.

The following items are included in your SoundPoint® IP-430 package. If you are missing any items, contact Northwest Vox.



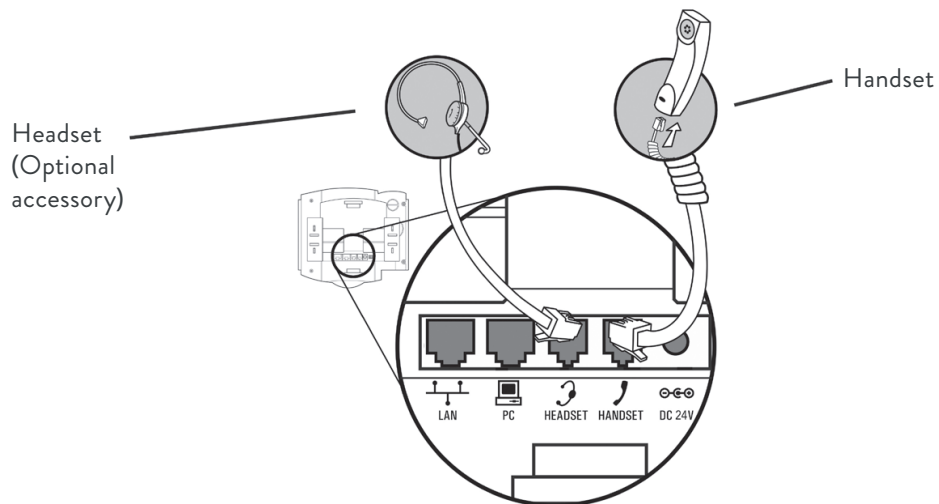
IP 430 Features



Installation

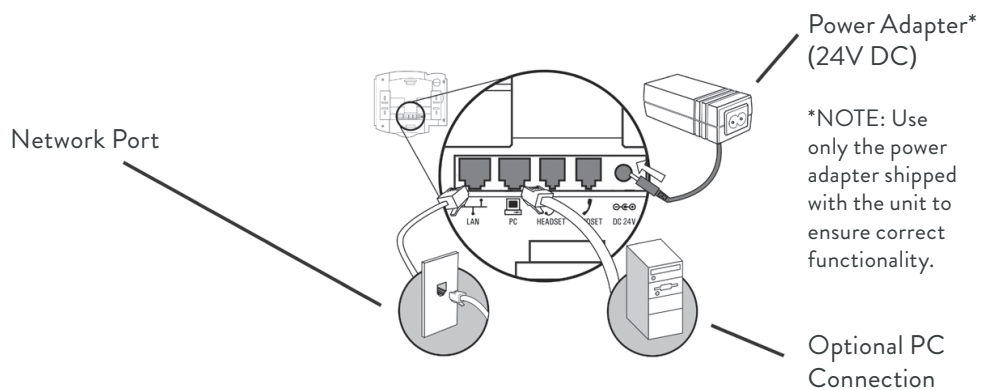
Basic Set-up

① Connecting Handset and Headset:

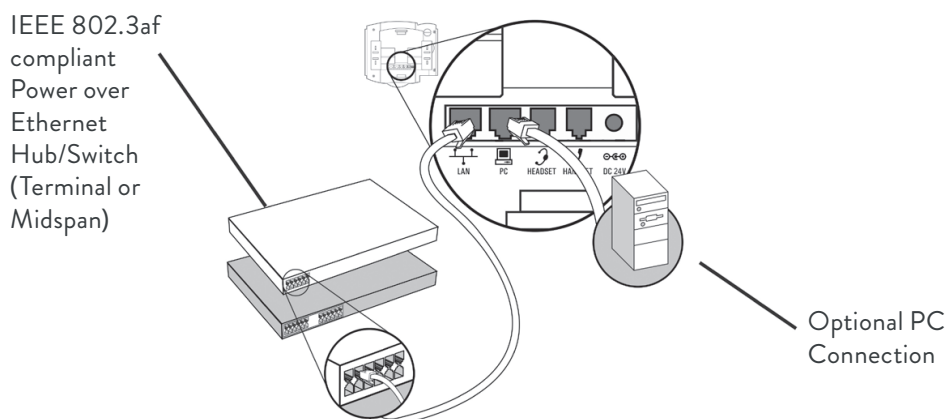


② Connecting Network and Power:

AC Power Option:



Power over Ethernet Option:



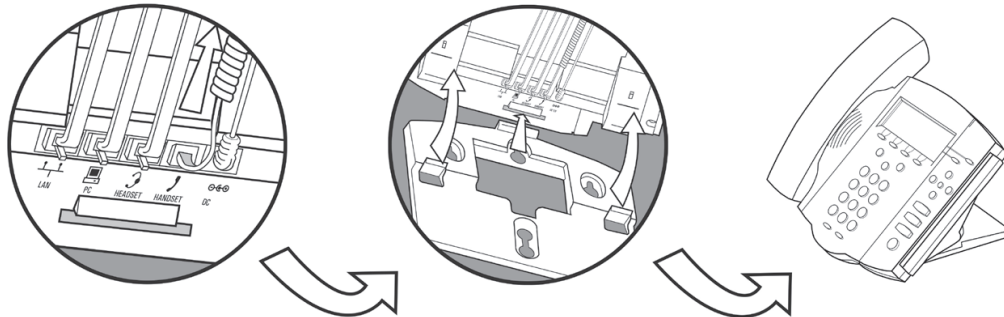
Installation

Attaching the Base Stand

The base stand can be attached to the SoundPoint® IP-430 in one of two ways:

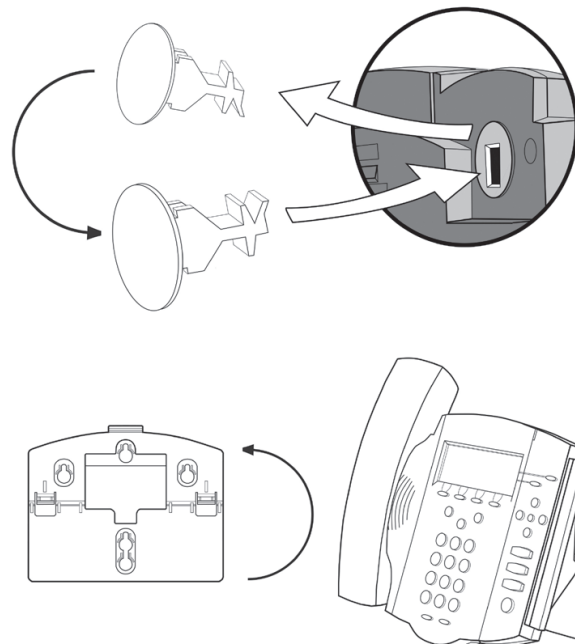
Deskmount Method:

- 1 Connect all cables.
- 2 Align tabs of base stand as shown.
- 3 Snap firmly into place.



Wallmount Method:

- 1 On the back of the phone, remove the key located behind the hookswitch. Reposition it so that the end tab (at 45° angle) is facing up. This will ensure that the handset remains in place within the cradle in a wallmount position.
- 2 With mounting tab of the base unit facing up, fasten the base stand to wall using wall anchors (not included). When base stand is secured to wall and all cables are connected, snap the SoundPoint® IP-430 into place.



IP-430 Installation

As soon as power is supplied, the SoundPoint® IP-430 starts an automated process of establishing itself on the network and downloading software and applications. Check with Northwest Vox if specific configuration is required for your

application software or if any errors appear during the download process.

For further instructions on how to use your new SoundPoint® IP-430, consult the User Guide available from polycom.com.